



THERMOSTATS & CONTROLLERS

FREEZE PROTECTION THERMOSTAT A/FS-XX SERIES

DESCRIPTION

The FS Series controllers are low limit controllers, also known as "Freeze Stats". The devices were designed for use on HVAC equipment that requires low-temperature cutout protection to prevent cooling coils from freezing. They should be mounted between the heating and cooling coils on the supply side of the fan unit. They respond to the lowest temperature sensed along any 1 foot section of the sensing element. The FS Series has manual and automatic reset versions, as well as, models that feature one or two sets of SPDT contacts.

NEW!



FEATURES

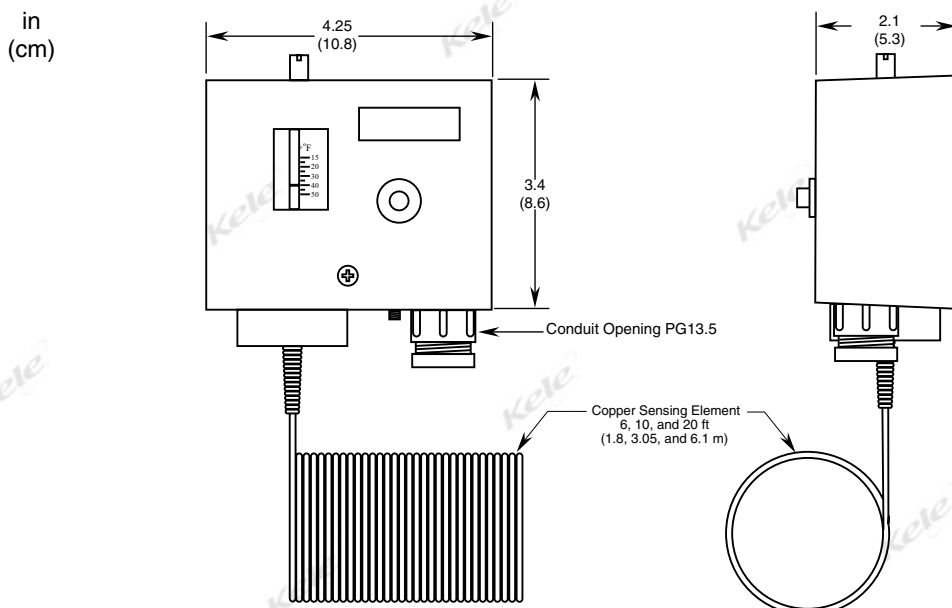
- Available with 6, 10, and 20 foot length capillaries
- Adjustable set-point
- Manual reset and automatic reset versions
- CE approval
- RoHS compliant



SPECIFICATIONS

Sensing Element	Vapor-filled, copper capillary tube	Setpoint Safety Lock	35.6°F (2.0°C) factory set, field adjustable
Output		Housing Rating	NEMA 1 IP40
A/FS-1, -3, -5	one SPDT Form 1C Relay	Operating Temperature	14° to 194°F (-10° to 65°C)
A/FS-2, -4, -6	two SPDT Form 1C Relays	Operating Humidity	0 to 95%, non-condensing
Contact Rating	250 VAC, 15 (8) A	Dimensions	3.4"H x 4.25"W x 2.1"D (8.6 x 10.8 x 5.3 cm)
Setpoint Range*	14° to 54°F (-10° to 12°C) field adjustable		
Setpoint Differential	1.8°F (1.0°C), fixed for auto reset		* Setpoint is factory set to 35.6°F (2.0°C)

DIMENSIONS



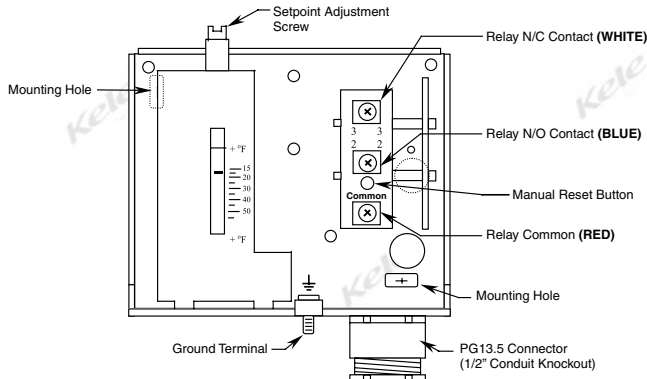
THERMOSTATS & CONTROLLERS

FREEZE PROTECTION THERMOSTAT A/FS-XX SERIES

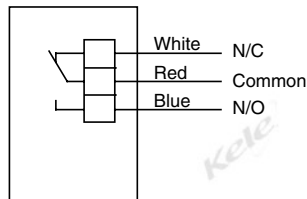
70°

WIRING

FS-1, FS-1A, FS-3, FS-3A, FS-5, FS-5A



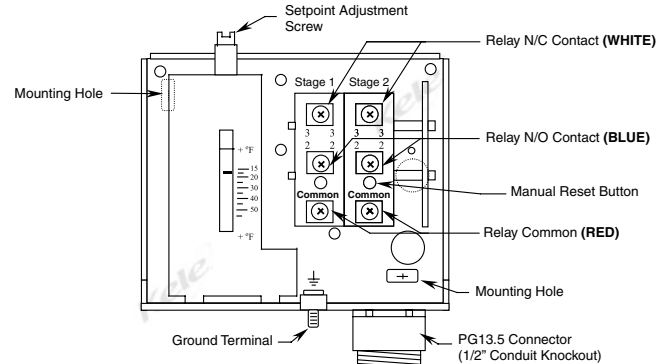
Schematic Diagram



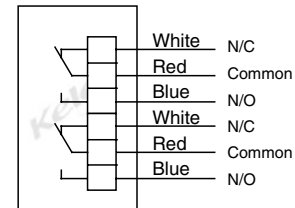
Note: Falling temperature and attained low cut-out point

Contact Connection: Red to Blue

FS-2, FS-2A, FS-4, FS-4A, FS-6, FS-6A



Schematic Diagram



Note: Falling temperature and attained low cut-out point

Contact Connection: Red to Blue

ORDERING INFORMATION

MODEL	DESCRIPTION
A/FS-1	1 set of SPDT contacts, 20 ft capillary, manual reset
A/FS-1A	1 set of SPDT contacts, 20 ft capillary, auto reset
A/FS-2	2 sets of SPDT contacts, 20 ft capillary, manual reset
A/FS-2A	2 sets of SPDT contacts, 20 ft capillary, auto reset
A/FS-3	1 set of SPDT contacts, 10 ft capillary, manual reset
A/FS-3A	1 set of SPDT contacts, 10 ft capillary, auto reset
A/FS-4	2 sets of SPDT contacts, 10 ft capillary, manual reset
A/FS-4A	2 sets of SPDT contacts, 10 ft capillary, auto reset
A/FS-5	1 set of SPDT contacts, 6 ft capillary, manual reset
A/FS-5A	1 set of SPDT contacts, 6 ft capillary, auto reset
A/FS-6	2 sets of SPDT contacts, 6 ft capillary, manual reset
A/FS-6A	2 sets of SPDT contacts, 6 ft capillary, auto reset

	RELATED PRODUCTS	Page
CC-1G-K	Plastic capillary and sensor holder mounting clip	39
M-648-K	Copper-clad capillary mounting clip	39